

## HUP LIGHT CHAIN KIT

## TA20-249-C

Technical update (PIP):

Service bulletin:

Instructions:

Family: GMA

Range: HUP and HUPC

Models: 32-27 & 40-30

C	Technical Support	10/7/2020	Update of paragraph 14
B	Technical Support	24/08/2020	Update of Mark 2
A	Technical Support	24/06/2020	Creation
Index	Name	Date	Comments

### DIAGNOSTICS

Operating procedure to fit the HUP light chain kit:

## HUP LIGHT CHAIN KIT

**TA20-249-C**

Technical update (PIP):

Service bulletin:

Instructions:

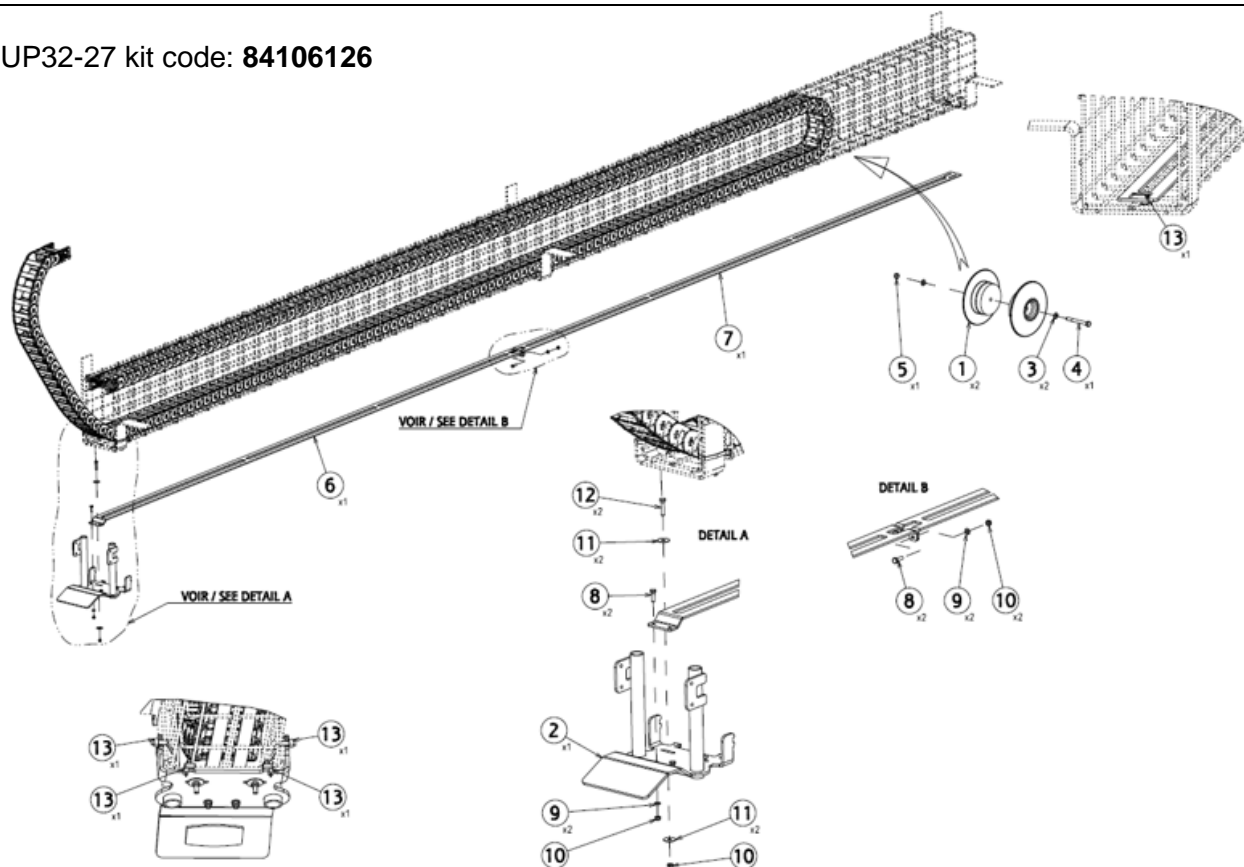
Family: GMA

Range: HUP and HUPC

Models: 32-27 & 40-30

C	Technical Support	10/7/2020	Update of paragraph 14
B	Technical Support	24/08/2020	Update of Mark 2
A	Technical Support	24/06/2020	Creation
Index	Name	Date	Comments

HUP32-27 kit code: **84106126**



**CODES FOR  
REPAIR  
PARTS**

Repère	Quantité	Name	Description2
1	2	ROULEAU	D230 LG.66~5
2	1	GUIDE	CHAIN HUP
3	2	RONDELLE	12 200HV FLZN 7089
4	1	VIS	M12x110 8.8 FLZN4014
5	1	BOULONS	M12 8FLZN ISO7042
6	1	RAIL	4x2023~8x60
7	1	RAIL	4x2816~3x60
8	4	VIS	M6x20 8.8 FLZN 4017
9	4	RONDELLE	6 200HV FLZN ISO7089
10	6	BOULONS	M6 8FLZN ISO7042
11	4	RONDELLE LL6N	LL6N (LARGE)
12	2	BOULONS	M6x30 8.8 FLZN 4014
13	5	COLLIER PLASTIQUE	ELEC. TIES L180

## HUP LIGHT CHAIN KIT

**TA20-249-C**

Technical update (PIP):

Service bulletin:

Instructions:

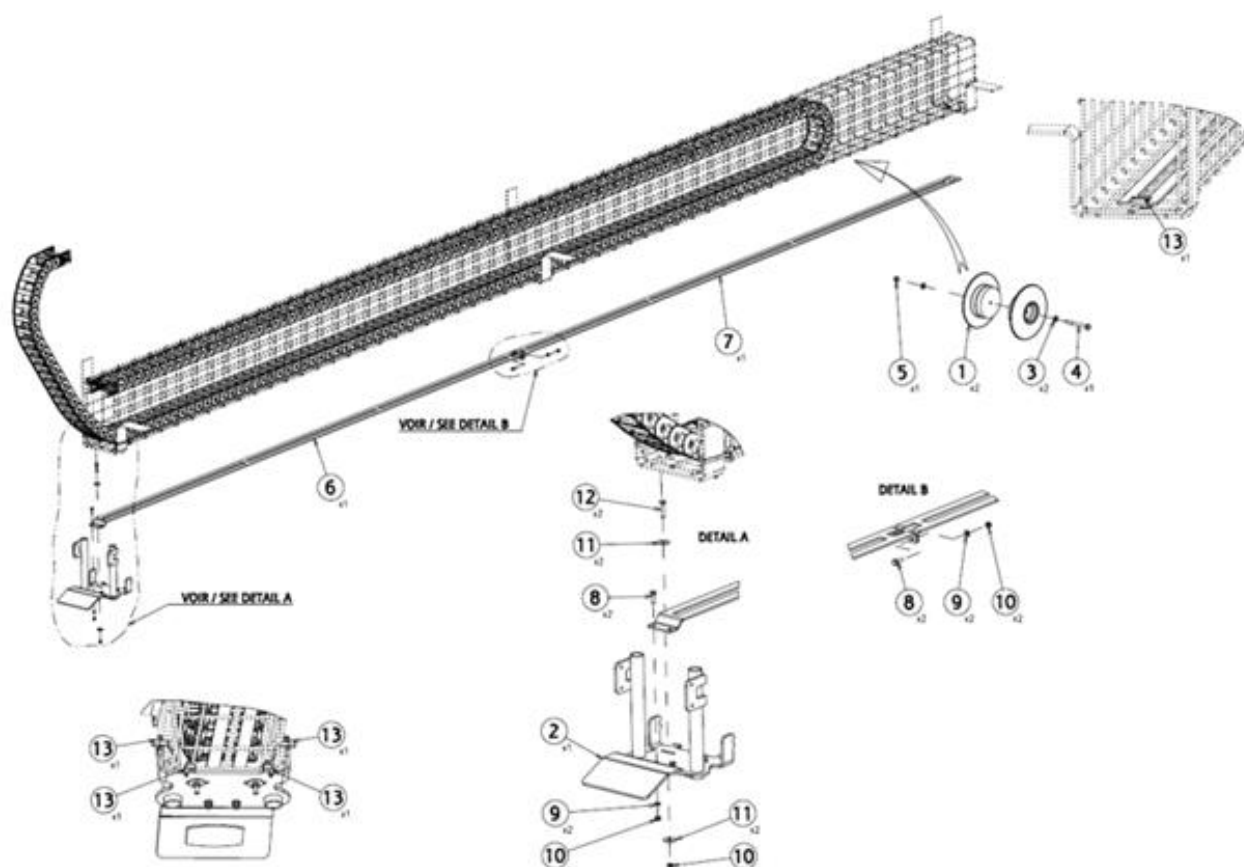
Family: GMA

Range: HUP and HUPC

Models: 32-27 & 40-30

C	Technical Support	10/7/2020	Update of paragraph 14
B	Technical Support	24/08/2020	Update of Mark 2
A	Technical Support	24/06/2020	Creation
Index	Name	Date	Comments

HUP40-30 and HUPC40-30 kit code: **84106127**



**CODES FOR  
REPAIR  
PARTS**

Repère	Quantité	Name	Description2
1	2	ROULEAU	D230 LG.66~5
2	1	GUIDE	CHAIN HUP
3	2	RONDELLE	12 200HV FLZN 7089
4	1	VIS	M12x110 8.8 FLZN4014
5	1	BOULONS	M12 8FLZN ISO7042
6	1	RAIL	4x2728~8x60
7	1	RAIL	4x2728~8x60
8	4	VIS	M6x20 8.8 FLZN 4017
9	4	RONDELLE	6 200HV FLZN ISO7089
10	6	BOULONS	M6 8FLZN ISO7042
11	4	RONDELLE LL6N	LL6N (LARGE)
12	2	BOULONS	M6x30 8.8 FLZN 4014
13	5	COLLIER PLASTIQUE	ELEC. TIES L180

## HUP LIGHT CHAIN KIT

**TA20-249-C**

Technical update (PIP):

Service bulletin:

Instructions:

Family: GMA

Range: HUP and HUPC

Models: 32-27 & 40-30

C	Technical Support	10/7/2020	Update of paragraph 14
B	Technical Support	24/08/2020	Update of Mark 2
A	Technical Support	24/06/2020	Creation
Index	Name	Date	Comments

1 - Crane in transport position



2 - Insert the pulley block locking pin

3 - Slightly slacken the hoist rope

4 - Assemble the roller, taking care to center the two plastic parts properly using the bolt, nut, and washers provided in the kit.



Items: 1-3-4-5

### SOLUTION

5 - Prepare the rail by assembling the two parts with the bolts, nuts, and washers provided in the kit.



Items: 6-7-8-9-10

6 - Put two "trestles" in position





## HUP LIGHT CHAIN KIT

**TA20-249-C**

Technical update (PIP):

Service bulletin:

Instructions:

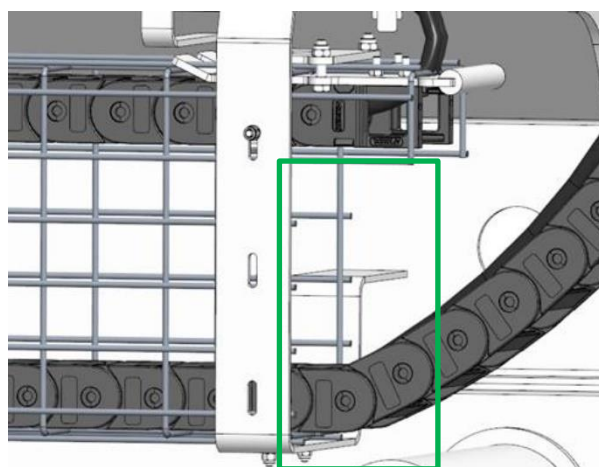
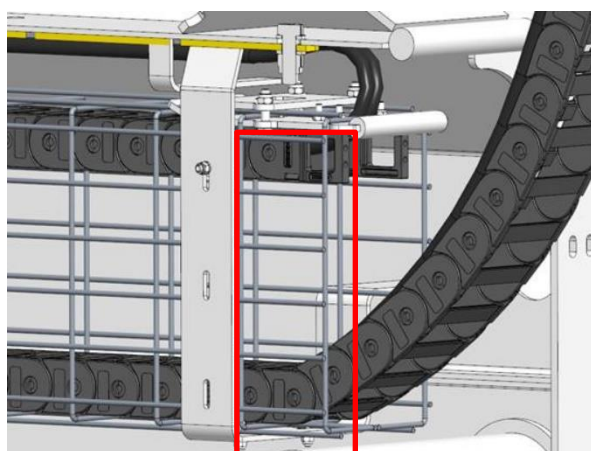
Family: GMA

Range: HUP and HUPC

Models: 32-27 & 40-30

C	Technical Support	10/7/2020	Update of paragraph 14
B	Technical Support	24/08/2020	Update of Mark 2
A	Technical Support	24/06/2020	Creation
Index	Name	Date	Comments

7 - On some Hup cranes, the chain support mesh can be long (see photos), in which case it needs to be cut as shown below.



8 - Cut and remove the 4 plastic clamps, as shown in the photo.



9 - Place a leveling board (about 4m long) or similar tool on the trestles, then remove the chain from the mast by sliding it carefully onto the leveling board.



### SOLUTION

## HUP LIGHT CHAIN KIT

**TA20-249-C**

Technical update (PIP):

Service bulletin:

Instructions:

Family: GMA

Range: HUP and HUPC

Models: 32-27 & 40-30

C	Technical Support	10/7/2020	Update of paragraph 14
B	Technical Support	24/08/2020	Update of Mark 2
A	Technical Support	24/06/2020	Creation
Index	Name	Date	Comments

10 - Insert the previously assembled rail as shown in the photos.

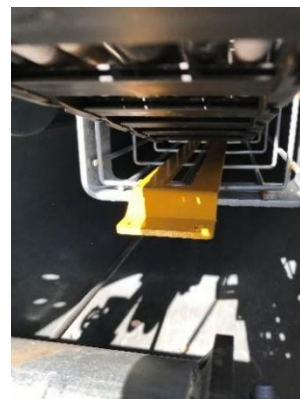
Insert it



Push it up to the bend



Turn it



11 - Insert the roller at the inlet of the chain. It is not necessary to push it all the way in.



12 - Position yourself at the mast entrance and carefully re-insert the chain into the mast by pushing it in.



**SOLUTION**

## HUP LIGHT CHAIN KIT

**TA20-249-C**

Technical update (PIP):

Service bulletin:

Instructions:

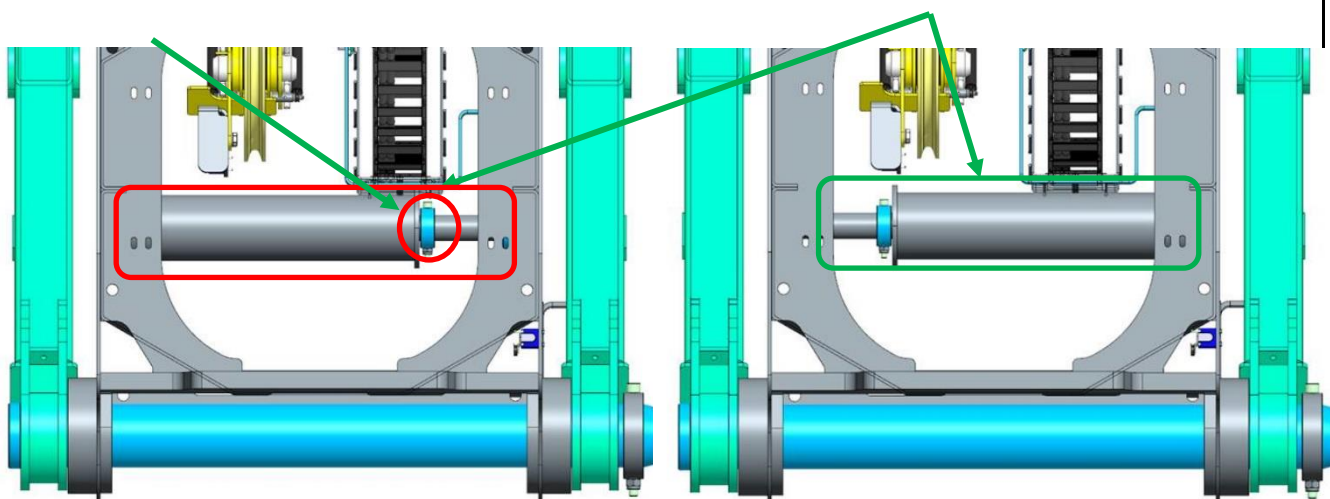
Family: GMA

Range: HUP and HUPC

Models: 32-27 & 40-30

C	Technical Support	10/7/2020	Update of paragraph 14
B	Technical Support	24/08/2020	Update of Mark 2
A	Technical Support	24/06/2020	Creation
Index	Name	Date	Comments

13 - On HUP40-30 only: change the direction of the pin holding the roller. To do this, remove the two screws located on the pin



14 - Before installing the chain guide support with the bolts provided in the kit.

### SOLUTION

- Check the presence or not of the wedge, framed with green in Photo No. 1.
  - If the wedge is present, it is a new generation mast, then the "ears" of the chain guide support must be cut and the wedge left in place. (See photos No. 2 and 3)
  - If the wedge is not present you can leave the chain guide support with the "ears".

Photo No. 1



Photo No. 2

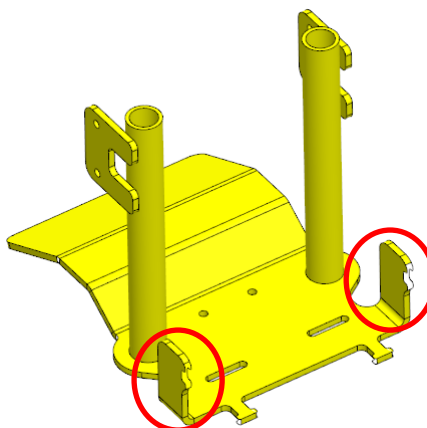
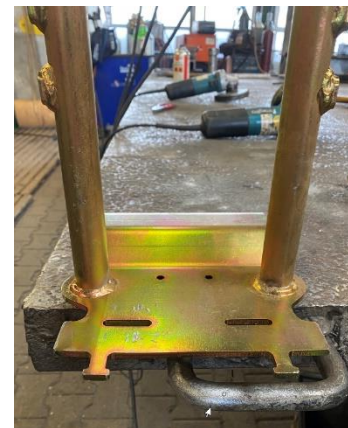


Photo No. 3





## HUP LIGHT CHAIN KIT

**TA20-249-C**

Technical update (PIP):

Service bulletin:

Instructions:

Family: GMA

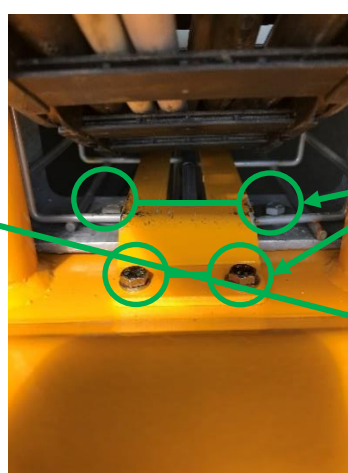
Range: HUP and HUPC

Models: 32-27 & 40-30

C	Technical Support	10/7/2020	Update of paragraph 14
B	Technical Support	24/08/2020	Update of Mark 2
A	Technical Support	24/06/2020	Creation
Index	Name	Date	Comments

15 - Install the chain guide support with the bolts provided in the kit.

*Be sure to correctly position the two guides in front of the cable trough*



Items: 8-9-10-11-12

Item: 2

### SOLUTION

15 - Install the plastic clamps as shown in the photos.

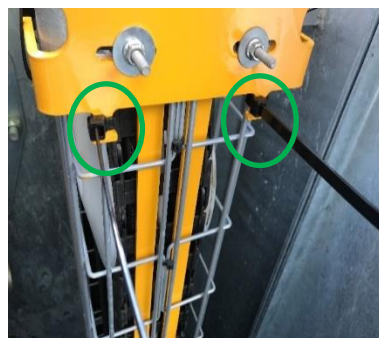
Left



Right



Below



Below, at the other end



16 - End of installation of the light chain kit.