

Lubrication of the swivel on the hoist rope

Procedure

- ▶ Perform this procedure when the condition below exists.

Conditions

- Diameter of the hoist rope: Min. 34 mm (Min. 1.34 in)

- ▶ Grease the swivel via its grease nipple.

Carrying out the square cycle for the wire hoist rope

**Note**

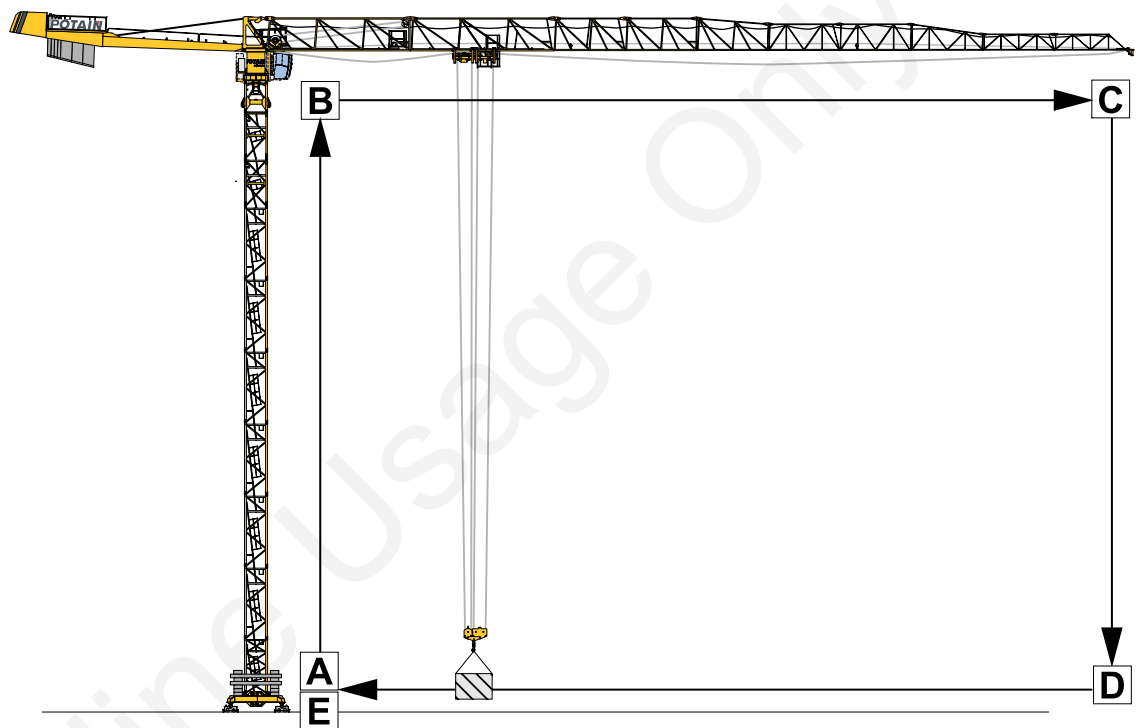
The square cycle involves carrying out combined trolleying/hoisting maneuvers with no load, which form a square cycle as shown on the following illustration. This cycle should be carried out once with no load, then with 10% of the maximum load of the crane.

The square cycle must always be carried out with the maximum number of rope lines (four lines for a crane with 2-fall or 4-fall rope reeving).

The square cycle should be carried out after every replacement of a rope in order to eliminate pre-tensioning in the rope caused during its installation.

For cranes with four-fall configuration (SM/DM or 1C/2C) working exclusively in two-fall: it is strongly recommended to carry out the square cycle every 10 days of work or at least every 20 hoisting hours in order to re-tighten the rope on the drum and to release the tension accumulated in the rope.

Procedure



1. **A** Move the trolley to the jib foot and the hook to its bottom position.
2. **B** Trolley at jib foot; raise the hook to the maximum height.
3. **C** Hook in top position; move the trolley to the jib nose.
4. **D** Trolley at jib nose; lower the hook to its bottom position.
5. **E** Hook in bottom position; move the hook to the jib foot.

1.19.5 Inspection of the wire ropes

The wire rope inspection must be carried out for every rope fitted on your crane:

- Hoist rope
- Luffing rope
- Trolley rope
- Retaining rope
- Derrick rope
- Other ropes...