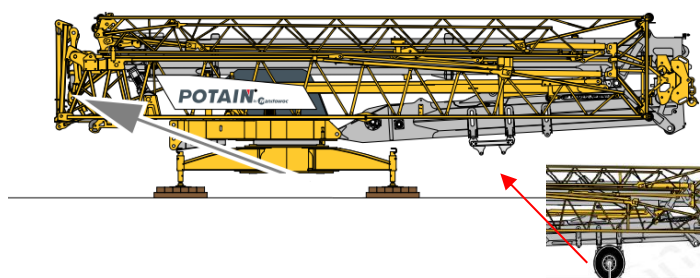
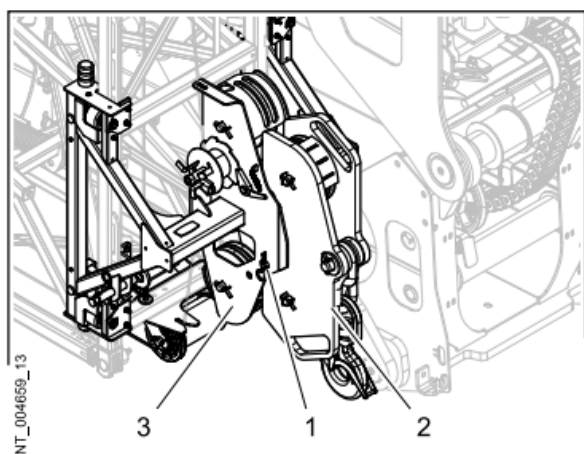


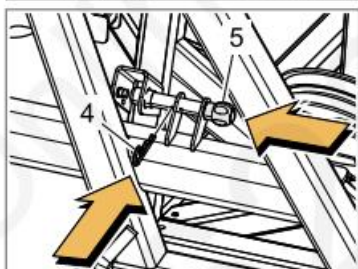
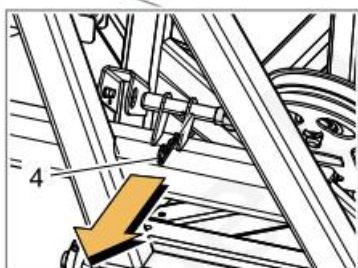
**This operation must be done by a expert technician.**



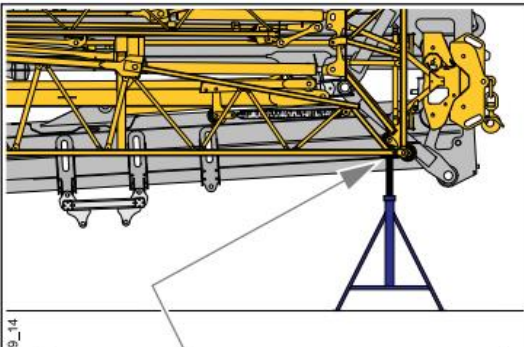
Crane positioned with its axle



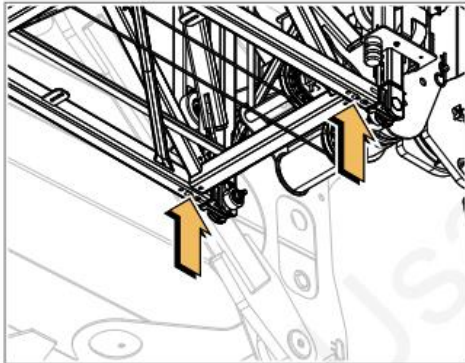
Remove pin 1 to free the pulley block



Lock the counter-jib by removing the safety pin **(4)**, pushing in the locking pin **(5)** then reinserting the safety pin **(4)**.



NT\_004659\_14



### WARNING

#### Risk of serious injury and damage to the equipment

If the soil resistance under the supports is too low, the crane may be unstable when unfolding the jib.

- The minimum soil resistance under the supports must be as specified in the "Installation" chapter.

4. Position the adjustable supports at the end of the jib foot.

Technical data	
Height for adjusting the supports from the ground	1 m to 1.5 m (3.3 ft to 4.92 ft)

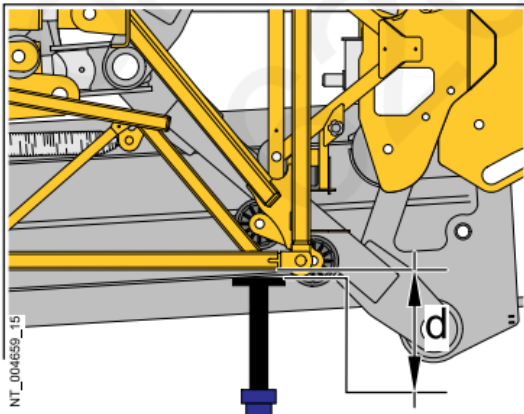
Technical data	
Total minimum capacity of the supports	6 t (13,200 lb)

Required material	
Adjustable supports	



### Note

Make sure to position the adjustable supports so that they do not interfere with the trolley and the pulley block once the jib has been unfolded.



NT\_004659\_15

Adjust the height of the adjustable supports so that they are as close as possible to the lower members of the jib foot.

Technical data	
Maximum distance between the top of the adjustable supports and the lower members of the jib foot (d)	5 mm (0.20 in)

On the CCS computer go to the Shunt Menu.

Enter the expert password.

Shunt jib. Be careful during these operations there is no safety device for the "winding" function for the hoisting rope. Pay special attention to this rope.