



14. Press the confirmation key on the **Jog Dial**.
15. Put the two-position selector in position **(A)**.

1.2.5 Low maintenance position

Placing the crane in low maintenance position



Work material

Adjustable supports	See procedure for quantity.
---------------------	-----------------------------



DANGER

Risk of serious injury and damage to equipment

Climbing on the jib can cause the machine to fall and serious injury.

- It is prohibited to climb on the jib.

1. Maintenance

1.2 Maintenance positions



CAUTION

Risk of damage to equipment

Using a method other than that described below to place the crane in low maintenance position can damage the connection between the jib and the mast.

- It is essential to comply with the procedure described to place the crane in low maintenance position.



Note

The crane must be folded and set up.

There must be enough space to be able to unfold the jib in safety.

Pre-tasks

Checking the conditions for putting the crane in low maintenance position



DANGER

Risk of accident

Unexpected starting of the crane during a maintenance operation.

- Do not allow the crane to be started during maintenance work. Tag the main switch with a warning to prevent starting.



WARNING

Risk of injury

Objects or debris falling into the safety area could create a risk of injury.

- Check that there is nobody within the safety area.

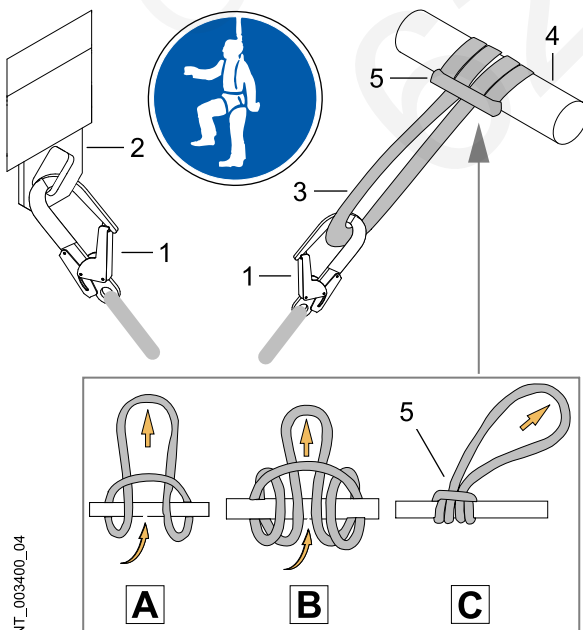


DANGER

Danger of death from falling

A fall, even from a low height, can cause serious injury or death. All operations requiring the use of the safety harness (1) must be performed according to the following instructions:

- To secure the safety harness (1), it is essential to use the anchorage points (2) (if any).
- Each anchor point (2) has been provided for securing only one operator at a time.
- In the absence of anchor points, it is essential to attach a sling (3), conforming to **EN 795 B**, around a rigid structural element (4) using a **Prussik knot** (5) and then secure the safety harness (1) with the sling (3).
- It is forbidden to fasten the safety harness on grab rails or accesses (steps, ladders, etc.).



NT_003400_04

ENU / 2022-01-19



WARNING

Risk of crushing

During certain checks or maintenance operations, there is significant risk of being crushed.

- ▶ The crane must not be in weathervaning position under any circumstances. The slewing brake must be activated.



DANGER

Risk of crane falling

During maintenance, the limit switches, load limiters, and moment cutouts are deactivated.

- ▶ During maintenance, the technician must take care not to exceed the limit switches, load limiters, or moment cutouts. The operator must observe the specifications on the type plate.
- ▶ During maintenance, the technician must keep the moving parts in view.



Note

To be able to carry out maintenance work safely, the crane must fulfill certain conditions and be in a suitable position.

1. Make sure that the wind speed does not exceed the maximum permissible.

Technical data	
Wind speed	Max. 50 km/h (Max. 31.1 mph)

2. Check that the crane is not in weathervaning position.
3. The crane must be set up correctly.
4. The crane must be completely folded up.

Procedure

1. Confirm the "Low maintenance position".



- ◀ This screen is displayed.

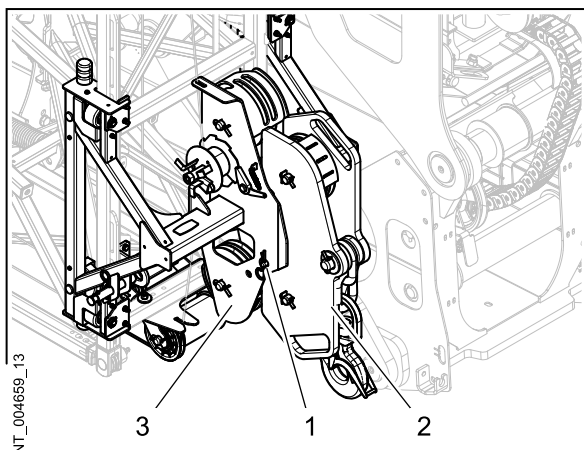


Note

The choice of low maintenance position is indicated on the radio control screen by:
"LM" with a radio control interface in English.
"MB" with a radio control interface in French.
"AB" with a radio control interface in German.
"MB" with a radio control interface in Italian, Spanish or Portuguese.

1. Maintenance

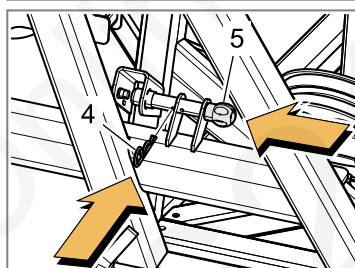
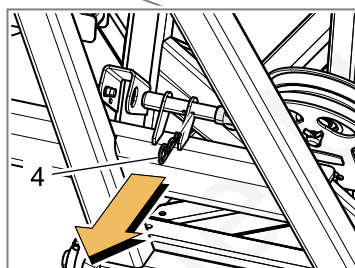
1.2 Maintenance positions



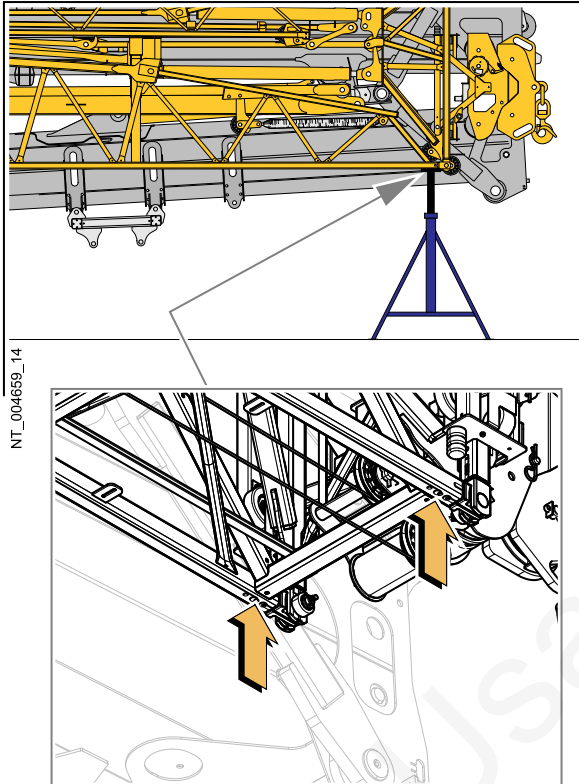
2. Check that the locking pin (1) locks the pulley block (2) on the trolley (3).



3. Lock the counter-jib by removing the safety pin (4), pushing in the locking pin (5) then reinserting the safety pin (4).



NT_004659_17



WARNING

Risk of serious injury and damage to the equipment

If the soil resistance under the supports is too low, the crane may be unstable when unfolding the jib.

- The minimum soil resistance under the supports must be as specified in the **"Installation"** chapter.

- Position the adjustable supports at the end of the jib foot.

Technical data	
Height for adjusting the supports from the ground	1 m to 1.5 m (3.3 ft to 4.92 ft)

Technical data	
Total minimum capacity of the supports	6 t (13,200 lb)

Required material	
Adjustable supports	

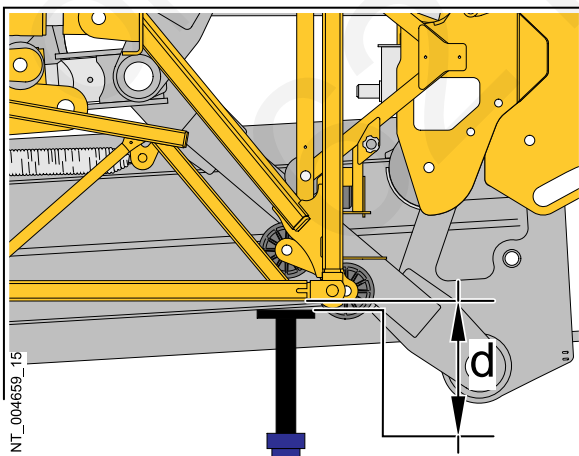


Note

Make sure to position the adjustable supports so that they do not interfere with the trolley and the pulley block once the jib has been unfolded.

- Adjust the height of the adjustable supports so that they are as close as possible to the lower members of the jib foot.

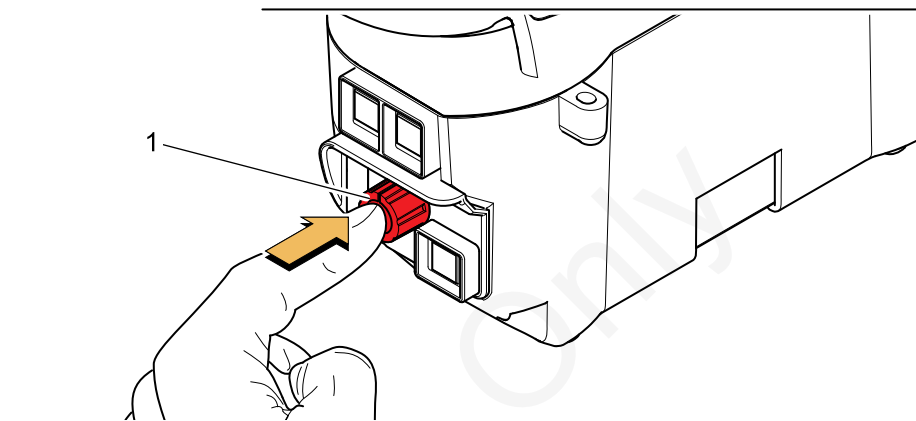
Technical data	
Maximum distance between the top of the adjustable supports and the lower members of the jib foot (d)	5 mm (0.20 in)




1. Maintenance

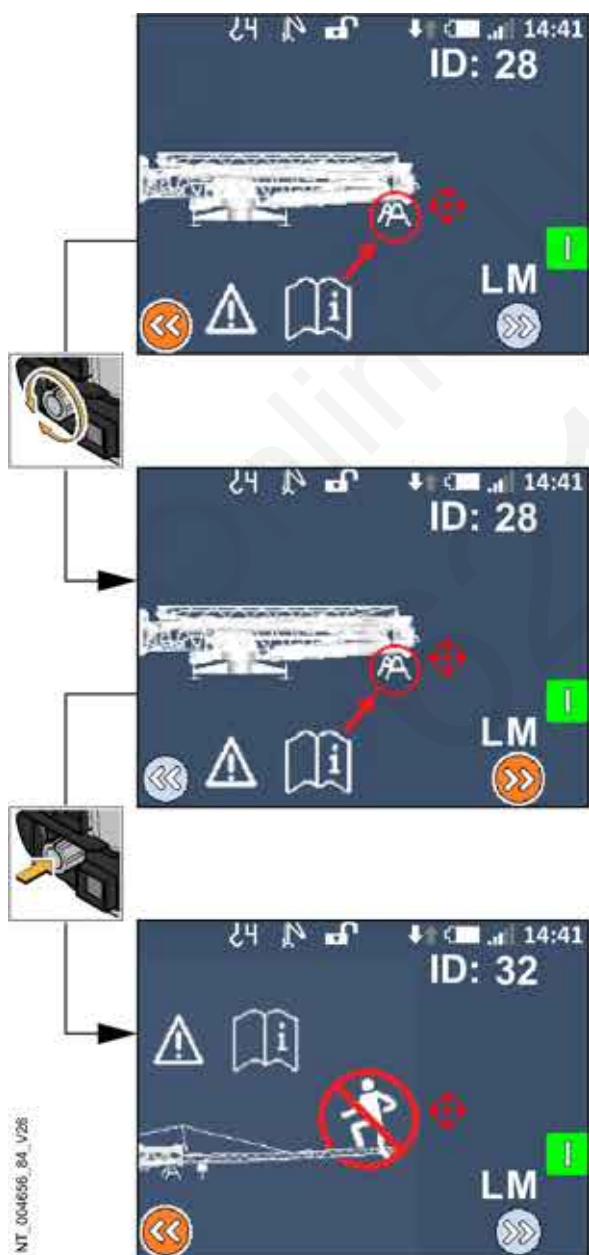
1.2 Maintenance positions

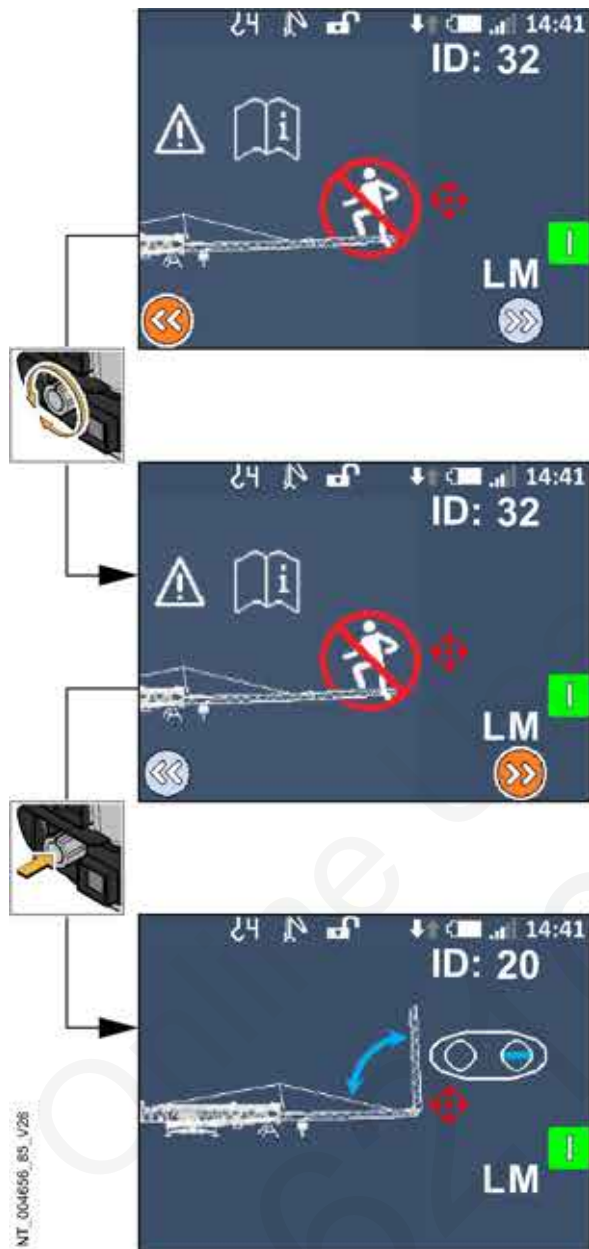
Placing the crane in low maintenance position



6. Press the confirmation key on the **Jog Dial (1)**.

7. Confirm the presence of the adjustable supports by turning the **Jog Dial** to select . Press the confirmation key on the **Jog Dial**.

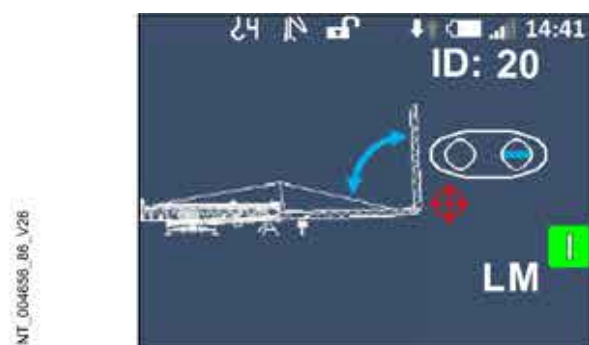




8. Confirm that the safety instructions are taken into account by turning the **Jog Dial** to select . Press the confirmation key on the **Jog Dial**.



9. Put the three-position selector in position (1).



- ◁ This screen is displayed.

1. Maintenance

1.2 Maintenance positions

10. Carry out a traveling movement forward.
 - ◁ The jib unfolds.



11. Continue the movement until the jib is completely unfolded.



Note

The behavior of the jib bearing points on the mast sections and on the adjustable supports must be checked visually when unfolding the jib.

Exiting the low maintenance position

Procedure

1. Select the "Working configuration target".

Exiting the low maintenance position

2. Put the three-position selector in position (1).



- ◁ This screen is displayed.



Note

The illustration is given as an example for a telescoping height at **H0** and a horizontal jib at 0°.



3. Carry out a traveling movement backward.
 - ◁ The jib folds up.



Note

The behavior of the jib bearing points on the mast sections and on the adjustable supports must be checked visually when folding the jib.

NT_003929_03

NT_004659_12

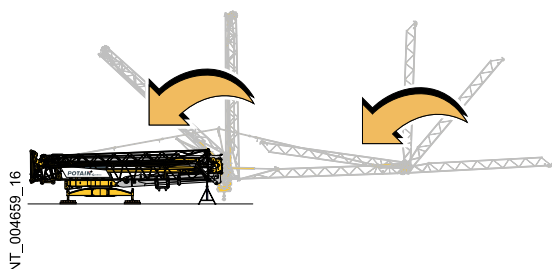
NT_004525_35

NT_004659_87_V28

NT_003929_05

ENU / 2022-01-19

- Continue the movement until the jib is completely folded.



NT_004659_16



NT_004656_B8_V28

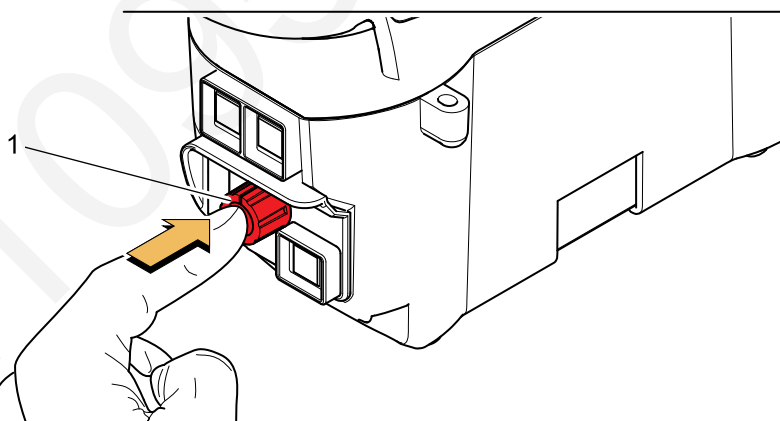
- This screen is displayed.



Note

The behavior of the jib bearing points on the mast sections and on the adjustable supports must be checked visually when folding the jib.

- Remove the adjustable supports.



NT_004124_06