

HUP CRANE ENCODERS PRINCIPLE

TA20-233-A

Product Improvement Program (PIP) :

Service bulletin:

Welding instructions :

Crane family: GMA

Range : HUP

Model:32-27/40-30

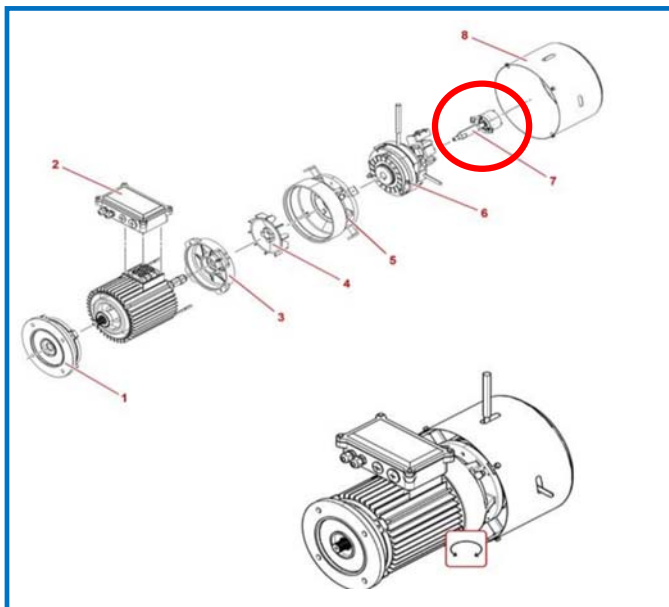
A SUPPORT TECHNIQUE 27/03/2020 Creation

Index Written by Date Comment

DIAGNOSIS

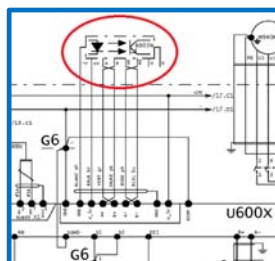
HUP cranes slewing motor and CCS encoders

SOLUTION



The motor slewing encoder:

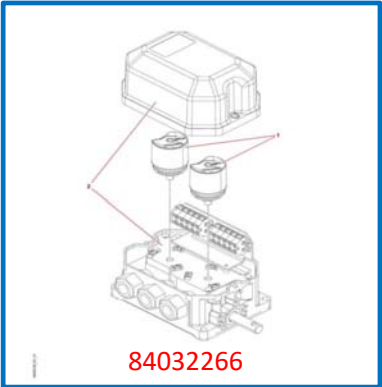
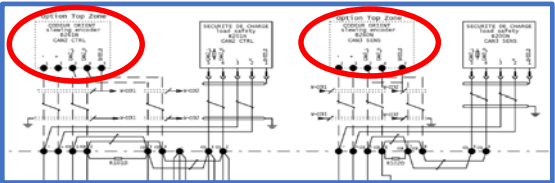
- its role is to ensure the slewing regulation between motor and frequency drive.



- He's connected to the frequency drive

How to enable/disable the motor slewing encoder?:

- Inside the CCS (CCT):
 - Menu= 4. Maintenance
 - Sub menu = 4.9 Degraded mode
 - Slewing encoder
 - YES/NO

HUP CRANE ENCODERS PRINCIPLE		TA20-233-A
Product Improvement Program (PIP) :		Service bulletin:
		Welding instructions :
Crane family: GMA		Range : HUP
		Model:32-27/40-30
SOLUTION	<div>  <div> <p>CCS CAN BUS ENCODERS:</p> <ul style="list-style-type: none"> its role is to give the position of the slewing to the computer. it is used for the TOP SITE or ANTICOLLISION options. When activated, it also serves as a slewing limit switch. If it is not activated, the limit switch is mechanical <p>There are two can bus encoders connected to the CTRL and SENS network</p>  </div> </div>	
	<p>How to enable/disable the CCS encoder:</p> <ul style="list-style-type: none"> Inside the CCS (CCT): <ul style="list-style-type: none"> Menu= 6. Mounting (8528) <ul style="list-style-type: none"> Submenu = 6.3 Encoder <ul style="list-style-type: none"> 6.3.1 redondant slewing encoder : validate the adress to enable/ select DISSO to disable 6.3.2 main slewing encoder: validate the adress to enable/ select DISSO to disable POWER OFF/ON THE CCS ! Menu= 6. Mounting (8528) <ul style="list-style-type: none"> Submenu =6.2 Configuration <ul style="list-style-type: none"> 6.2.2 option <ul style="list-style-type: none"> 6.2.2.1 Option 1 : <ul style="list-style-type: none"> 62.2.1.5 : Slewing encoder = YES/ NO (to activate or not the encoders) After pairing and activating the CCS encoders, it is mandatory to validate the zero slewing in the teach-in menu to operate the slewing. 	
REPAIR PART NUMBER		